

Geko 1000 / 1300 / 1500 / 1800 / 2200 / 2500

120V AC; 60 Hz; 1500 Watts 240V AC; 50Hz; 1500 Watts

## Installation & Operation Manual

---

### CONSUMER SAFETY INFORMATION

1. Read this manual before installing and operating this appliance.
2. Failure to follow these instructions may result in electric shock, fire property or personal injury.
3. Do not store or use gasoline or other flammable liquids in vicinity of this appliance.
4. No venting required.

# Important Safety Information

## Safety Definitions

The following keywords are defined and can be used in this document. Keywords at the start of a **WARNING** indicate the type and seriousness of the ensuing risk if measures to prevent the risk are not taken.



### CAUTION

Indicates a hazardous situation which, if not avoided, could result in property damage and minor or moderate injury.



### WARNING

Indicates a hazardous situation that, if not avoided, could result in death or serious injury.



Indicates a hazard which, if not avoided, will result in electric shock, fire, serious injury, or death.



### NOTICE

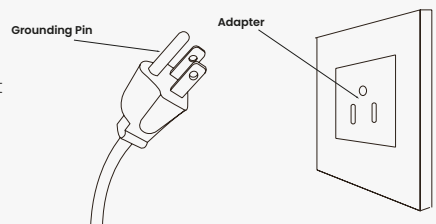
Indicates additional information that is not related to physical injury.



### WARNING! SAFETY INFORMATION

- **Read all instructions before using this heater!**
- This heater is hot **when in use**. To avoid burns, **DO NOT** let bare skin touch hot surfaces. If provided, use handles when moving this heater. Keep **combustible materials**, such as furniture, pillows, bedding, papers, clothes, and curtains at least **3 feet (0.9m)** from the front of **the heater**, and **keep them away from the sides and rear**.
- **Extreme caution** is necessary when any heater is used by or near children, persons with reduced physical, sensory, or mental capabilities, or lack of experience and knowledge, or when the heater is left operating and unattended.
- **DO NOT** operate any heater with a **damaged cord or plug** or after the heater malfunctions / has been **dropped or damaged in any manner**. Discard the heater or return to the authorised service facility for examination and /or repair.
- **DO NOT** run power cord under carpeting. **DO NOT** cover power cord with throws, rugs, runners or similar coverings. **DO NOT** route power cord under furniture or appliances. Arrange power cord away from traffic area where it will not be tripped over.
- **Connect to properly grounded outlets ONLY.**
- **DO NOT** insert or allow foreign objects to **enter any ventilation or exhaust openings** as this may cause **electric shock or fire or damage the heater**.
- To prevent a possible fire **DO NOT** block air intakes or the exhaust in any manner. Doing so could cause a fire. **DO NOT** use on soft surfaces like a bed where openings may become blocked.

- A heater has **hot and arcing or sparking parts inside**. **DO NOT** use it in areas where **gasoline, paint or flammable liquids** are used or stored.
- **Use this heater only as described in this manual. Any other use NOT recommended by the manufacturer may cause fire, electric shock or injury to persons.**
- **ALWAYS plug heaters directly into a wall outlet/receptacle. Never use with an extension cord or relocatable power tap (outlet/power strip).**
- **DO NOT** place the heater near a bed as objects such as pillows or blankets can fall off the bed and be ignited by the heater.
- **NEVER** use this heater in **bathrooms, laundry rooms** or any other location where the heater could fall into a **bathtub or pool, become damp or come in contact with water.**
- **AVOID FIRE!** Regularly inspect all air vents to make sure they are free from dust, lint, or other blockage. Unplug the unit and clean with a vacuum **ONLY. DO NOT** rinse or get wet.
- **ALWAYS** hung to wall bracket before use. **DO NOT** set on the floor or other surface to use.
- **NEVER** use a wall hung bracket from another manufacturer.
- This product is **not intended to be a primary heat source**. It is for supplemental heat only.
- **INDOOR use only! NEVER** use this heater outdoors! Doing so may result in electric shock!
- **Risk of electric shock! DO NOT OPEN!** No user-serviceable parts inside!
- **ALWAYS** turn this heater off before unplugging it from the outlet.
- **ALWAYS** disconnect this unit from the power supply before performing any assembly or cleaning, or before relocating the electric fireplace.
- **NEVER** leave this heater unattended. **ALWAYS** unplug this heater when not in use.
- **ALWAYS** store this heater in a dry location. **NEVER** use the fireplace if it has become wet.
- **NEVER** plug this heater into an outlet that is **old, cracked or has any loose wires or connections**. Plugging this heater into a faulty outlet could result in electric arcing within the outlet that could cause the outlet to overheat or catch fire.
- **ALWAYS** check your heater cord and plug connections with each use!
- **MAKE SURE** the plug fits tightly in the outlet! Faulty wall outlet connections or loose plugs can cause the outlet to overheat.
- Heaters draw more current than small appliances. Overheating may occur even if this has not occurred with the use of other appliances.
- During use check frequently to see if the plug outlet or face plate is **HOT!**
- If the outlet or face plate is **HOT** discontinue use immediately and have a qualified electrician inspect and/or replace the faulty outlets.
- The power cord supplied with the heater has a plug with two flat blades (live and neutral) and one round pin (ground). If a 3-slot receptacle is not available, an adapter **MUST** be used. The adapter **MUST** be properly grounded to the outlet box (see figure at right) (Note: Adapter **NOT INCLUDED**)
- **SAVE THESE INSTRUCTIONS!**



**CAUTION**

Risk of electric shock! **DO NOT** open no user-serviceable parts inside.

**WARNING**

Read and understand this entire owner's manual, including all safety information, before plugging in or using this product. Failure to do so could result in fire, electric shock, serious personal injury, or death.



Keep this owner's manual for future reference. If you sell or give this product away, make sure this manual accompanies this product.

**WARNING**

This carton includes GLASS! ALWAYS use extreme caution when handling glass. Failure to do so could result in personal injury or property damage.

**WARNING**

ALWAYS unplug this fireplace heater before assembly or cleaning, or before relocating. Failure to do so could result in electric shock, fire, or personal injury.

**IMPORTANT**

Registration Number: WEE/DHI656ZW

In accordance with European Directive 2012/19/EU, waste electrical and electronic equipment (WEEE) must not be disposed of with household waste. Recycle responsibly.

# Installation Instructions

## Unpacking & Testing The Appliance

Carefully remove the appliance from the box. Prior to installing the appliance, test to make sure the appliance operates properly by plugging the power supply cord into a conveniently located 220-240 Volt grounded outlet.

## Grounding The Appliance

This appliance is for use on 240V. For connecting three-blade grounding type plugs to three slot receptacles. The green grounding lug extending from the adapter must be connected to a permanent ground such as a properly grounded outlet box. The adapter should not be used if a three slot grounded receptacle is available. To disconnect appliance, turn controls to off, then remove plug from outlet.

## Installation

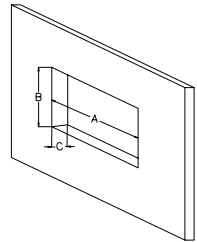


### WARNING

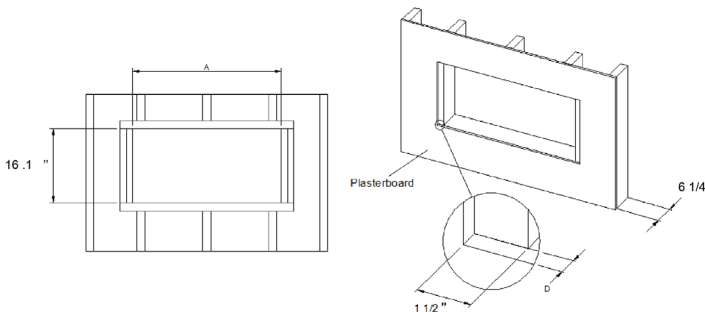
Find a safe location and build a suitable hole for fireplace. Minimum clearance from the ceiling and the mantel must be at least 8 inches(200mm); minimum clearance from the front must be at least 3 feet(900mm).Choose a location near an outlet so an extension cord is not required.

## Product Dimensions

MODEL	A (Width)	B (Height)	C (Depth)
Geko 1000	40.89" (1038.6mm)	16.1" (410mm)	6 1/4" (158.75mm)
Geko 1300	48.88" (1241.6mm)	16.1" (410mm)	6 1/4" (158.75mm)
Geko 1500	58.88" (1495.6mm)	16.1" (410mm)	6 1/4" (158.75mm)
Geko 1800	72.89" (1851.6mm)	16.1" (410mm)	6 1/4" (158.75mm)
Geko 2200	86.88" (2206.6mm)	16.1" (410mm)	6 1/4" (158.75mm)
Geko 2500	98.88" (2511.6mm)	16.1" (410mm)	6 1/4" (158.75mm)



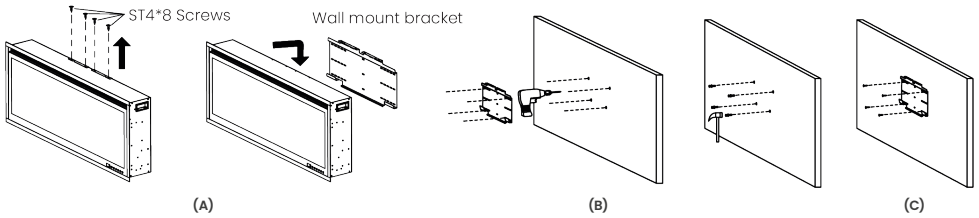
Prepare a wall with a framed opening of 48.88 inch (1241.6mm) wide 16.1" (410mm) high. Make sure the width of the wood block on both sides which used to fix the fireplace is 3" (76mm). Make sure that the revealed wood block width on both sides is about 1 1/2" (37.5mm) after finishing the plasterboard. Measure the depth D from the plasterboard surface to the wood block and write it down.



# Wall Mounted Fireplace Style

## Step 1

Remove the four silver coloured screws on the top, and take off the wall bracket (see **Figure A** below), use a drill to drill the wall (see **Figure B** below). Using wall plugs, screw the wall bracket to the wall (see **Figure C** below).



## Step 2

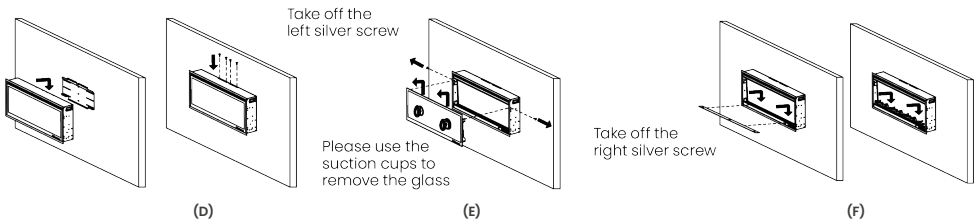
Lift the fireplace onto the bracket, then lock the 4 silver screws on the top **Figure (D)**.

## Step 3

Take off the 2 silver screws on the left side and right side. Use a suction cup to hold the glass surface, first lift the glass upwards and then outwards, and find a place to put the glass **Figure (E)**.

## Step 4

Put the plastic tray, crystal and wood fire logs on the fire, then fit the glass panel back onto the fireplace, securing by 2 screws **Figure (F)**



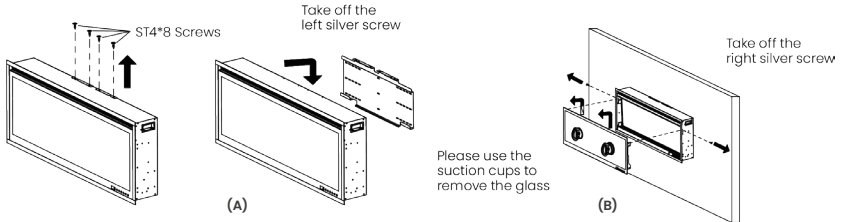
# Recessed Fireplace Style

## Step 1

Take off the 4 silver screws on the top and then take off the wall bracket from the fireplace. **Figure (A)**

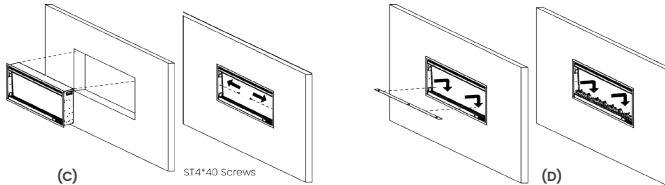
## Step 2

Take off the 2 silver screws on the left side and right side. Use a suction cup to hold the glass surface, first lift the glass upwards and then outwards, and find a place to put the glass. **Figure (B)**



## Step 3

Put the fireplace into the hole, then fix the 2 silver screws from the inside of the fireplace. **Figure (C)** Put the plastic tray, and put on the crystal and drift wood fire logs. **Figure (D)**



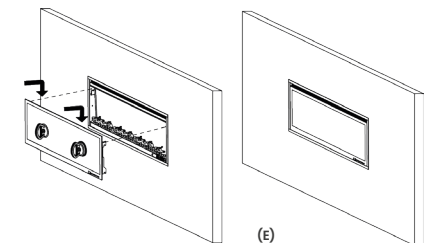
## Step 4

Please install the glass in the direction of the arrow **Figure (E)**, and finally remove the suction cup from the glass. After the fireplace is installed, plug in the power and use the fireplace. Please **do not throw away** the suction cup after use. Please save it in case you use it next time. Carefully set both hooks of the front glass panel onto the firebox.



### WARNING

Take care of the installation of a Glass panel. The manufacturer recommends that two adults install, the glass panel. Always use extreme caution when handling glass. Failure to do so could result in personal injury or property damage.



Make sure the glass is fully attached to the firebox so that the control panel can work properly. This will keep the decorative glass in place and enable the control panel work well.

# Safety

## Power

---

Plug the power cord into a 240 Volt 13 Amp outlet. Make sure the outlet is in good condition and that the plug is not loose. **NEVER** exceed the maximum amperage for the circuit. **DO NOT** plug other appliances into the same circuit.

## Temperature Limiting Control

---

This heater is equipped with a Temperature Limiting Control. Should the heater reach an unsafe temperature, the heater will automatically turn OFF. To reset:

1. Unplug the power cord from the outlet.
2. Turn the ON/OFF switch on the CONTROL PANEL to OFF. Wait 5 minutes.
3. Inspect the fireplace to make sure no vents are blocked, or clogged with dust or lint. If they are, use a vacuum to clean the vent areas.
4. With the POWER switch in the OFF position, plug the power cord back into the outlet.
5. If the problem continues, have your outlet and wiring inspected by a professional.

## Safety Instructions

---

- Only use the appliance in accordance with the instructions in this manual! It cannot be used for any other purpose.
- Never operate the appliance when the appliance itself or the main cable show any signs of damage. In order to avoid overheating, **DO NOT** cover the heater.
- Be responsible when handling the packing material. Warning: plastic wrapping may be lethal to children.
- **DO NOT** place the appliance next to a socket.
- Never operate the heater on a program switch, timer switch or any other appliance for automatic operation.
- The heater must not be located immediately below a socket-outlet. If the supply cord is damaged, it must be replaced by the manufacturer or its service agent or a similarly qualified person in order to avoid a hazard.
- Never leave small children unattended near the appliance.
- In case of malfunction, disconnect the plug immediately.
- When not in use for a considerable amount of time, unplug the appliance.
- Components should only be serviced by an approved electro technician.



**NOTICE**

When the heater is first turned on, a slight odour may be present. This is normal and should not occur again unless the heater is not used for a long period of time.

**NOTICE**

To improve operation aim the remote control at the front of the fireplace. **DO NOT** press the buttons too quickly. Give the unit time to respond to each command.

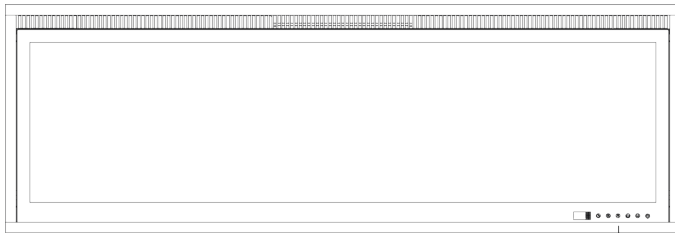
**WARNING**

NEVER dispose of batteries in fire. Failure to observe this precaution may result in an explosion. Dispose of batteries at your local hazardous material processing centre.

## To Switch On

---

Plug in the appliance into the socket. Turn on the **power switch**. The control **switch panel** is on the bottom of fireplace (see below).



Control Switch Panel

## CAUTION: Sharp Edges!

---

1. After installation, the power plug should be accessible.
2. If the power cord is damaged it must be replaced by the manufacturer its service agent or a similarly qualified person to avoid a hazard.
3. The heater must not be located immediately below a socket.
4. The appliance is not intended for use by young children or by persons with reduced physical, sensory, or mental capabilities. Young children should be supervised to ensure they **DO NOT** play with the appliance.
5. **DO NOT** use this heater in the immediate surroundings of a bath, a shower or swimming pool.
6. To avoid overheating **DO NOT** cover the heater

## Remote Control Battery Information

---

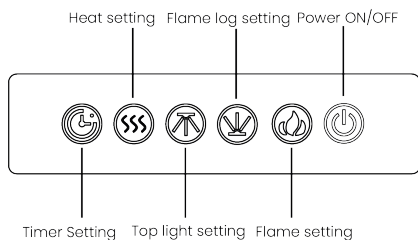
- This remote control uses **two AAA** batteries (**NOT INCLUDED**).
- Instructions for battery installation are on the Remote Control battery compartment.

# Operating Instructions

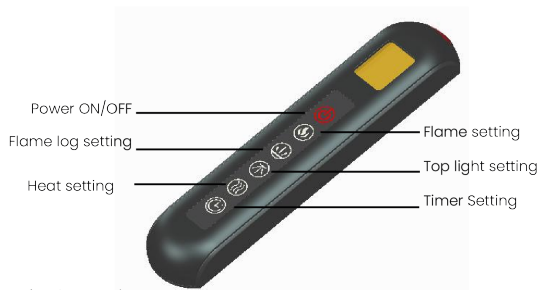


## WARNING

Do not move or remove the mesh trim panel, when the appliance is plugged in and operating. This will cause the remote control and touch panel to no longer function.



You can keep pressing "Flame setting" button for 10 seconds to connect to the mobile APP.



## Control Panel / Remote Control Operation

Control panel **POWER** switch must be **ON** to use remote control. The touch display panel is shown by LED's on the front bottom right of the appliance. The LED's will appear on the bottom of the fireplace control panel.

ICONS	FUNCTIONS	ACTION & INDICATION
	<b>Power</b>	Turns the appliance ON/OFF.
	<b>Flame</b>	Controls Flame change. 13 colours : ( L01,L02...L12,L13) Flame dims from L01 to L13. Cycle by cycle.
	<b>Flame Log</b>	Controls Flame log change. 13 colours : ( C01,C02...C12,C13) Flame dims from C01 to C13. Cycle by cycle.
	<b>Top Light</b>	Controls Top Light colours. 3 colours : ( F0 OFF-F1 yellow-F2 blue-F3 yellow & blue)
	<b>Heater</b>	Controls the Heater. Press button to initiate the heater. <b>(OFF)</b> no heater or blower. <b>(LO)</b> heater blows warm air (750W) <b>(HI)</b> heater blows hot air (1500W) <b>NOTE: Heater functions cycle from OFF-LO-HI</b>
	<b>Control With App</b>	Download the "Tuya Smart" app in the Playstore or Appstore and create an account in order to use all functions. To enter pairing mode press the "Flame setting " button on the fireplace for 10 seconds,
	<b>Timer</b>	Controls the Timer. 9 Settings: (1h, 2h, 3h, 4h, 5h, 6h, 7h, 8h,9h) Press button until reach desired setting.

# Care & Maintenance

## Cleaning



**ALWAYS** turn the heater OFF and unplug the power cord from the outlet before cleaning, performing maintenance, or moving this fireplace. Failure to do so could result in electric shock, fire, or personal injury.



**NEVER** immerse in water or spray with water. Doing so could result in electric shock, fire, or personal injury.

## Metal

---

- Buff using a soft cloth, slightly dampened with a citrus oil-based product.
- **DO NOT** use brass polish or household cleaners as these products will damage the metal trim.

## Glass

---

- Use a good quality glass cleaner and dry thoroughly with a paper towel or lint-free cloth.
- **NEVER** use abrasive cleansers, liquid sprays or any cleaner that could scratch the surface.

## Plastic

---

- Wipe gently with a slightly damp cloth and a mild solution of dish soap and warm water.
- **NEVER** use abrasive cleansers, liquid sprays or any cleaner that could scratch the surface.

## Vents

---

- Use a vacuum or duster to remove dust and dirt from the heater and vent areas.
- Clean the exterior of the fireplace with a slightly damp cloth or duster.

## Maintenance



Risk of electric shock! **DO NOT OPEN!** No user-serviceable parts inside!



**ALWAYS** turn the heater **OFF** and unplug the power cord from the outlet before cleaning, performing maintenance, or moving this fireplace. Failure to do so could result in electric shock, fire, or personal injury.

## Storage

---

- Store heater in a clean dry place when not in use.



**WARNING**  
No other servicing should be performed by the consumer. Do not attempt to service the unit yourself.

# Troubleshooting

## ⚠ WARNING



### WARNING

Disconnect the appliance completely and let cool prior to any service. Only a qualified service person should service and repair this electric appliance .

PROBLEM	POSSIBLE CAUSE	SOLUTION
<b>Fireplace turns off and will not turn on</b>	Fireplace has overheated and safety device has caused thermal switch to disconnect or home circuit breaker has opened.	Pull the plug and wait 5 minutes to plug it back in and turn it on.
<b>Flame is not moving</b>	<ol style="list-style-type: none"> <li>Loose wiring.</li> <li>Flame motor defective.</li> <li>Flame rod out of place.</li> </ol>	<ol style="list-style-type: none"> <li>Inspect wiring for loose connections.</li> <li>Call a qualified service technician to replace flame motor.</li> <li>'Flame Rod' out of place due to rough transit/handling of the product. This issue can be corrected simply by removing the glass, flipping the fireplace upside down removing a set of screws that are holding the bottom frame plate and placing the flame rod back into place.</li> </ol>
<b>Flame is not visible</b>	Wiring is loose.	<ol style="list-style-type: none"> <li>Disconnect from power source and inspect wiring for loose connections and repair or replace if necessary.</li> <li>Push the flame button to high.</li> </ol>
<b>Log set and / or is not glowing</b>	<ol style="list-style-type: none"> <li>Wiring is loose.</li> <li>Ember is off mode.</li> </ol>	Disconnect from power source and inspect wiring for loose connections and repair or replace if necessary.
<b>Remote control does not work</b>	<ol style="list-style-type: none"> <li>Low batteries.</li> <li>Not aiming correctly.</li> <li>Defective remote control and/or sensor.</li> </ol>	<ol style="list-style-type: none"> <li>Replace batteries in remote control.</li> <li>Aim control at sensor located directly behind glass screen in centre of unit just above logs.</li> <li>Replace remote control and/or sensor.</li> </ol>

## WARNING



### WARNING

Disconnect the appliance completely and let cool prior to any service. Only a qualified service person should service and repair this electric appliance .

PROBLEM	POSSIBLE CAUSE	SOLUTION
<b>Fireplace will not come on when switch is flipped to on</b>	<ol style="list-style-type: none"><li>1. The fireplace is not plugged into an electrical outlet.</li><li>2. Control failure.</li><li>3. Breaker tripped.</li></ol>	<ol style="list-style-type: none"><li>1. Check plug.</li><li>2. Call a qualified service technician.</li><li>3. Reset breaker.</li></ol>
<b>Heater does not provide heat when turned on</b>	<ol style="list-style-type: none"><li>1. Thermal switch has been tripped.</li><li>2. Wiring is loose.</li><li>3. Heater is defective.</li></ol>	<ol style="list-style-type: none"><li>1. Turn unit off and unplug unit for 10 minutes. Plug back in and turn unit on. If plug cannot be reached, follow directions for tripped circuit breaker.</li><li>2. Disconnect from power source and inspect wiring for loose connections and repair or replace if necessary.</li><li>3. Replace heater.</li></ol>

### CAUTION



Please make sure the unit is always disconnected before performing any work. Always place the glass and the unit on a towel or other protective material to avoid damaging the parts or frame.

This entire process should not take longer than 20-30 minutes.

## LIMITED WARRANTY

This warrants to the original purchaser that this product is free from defects in material and workmanship as of the date of purchase and that it will, under normal use and proper care, remain so for one year from the date of purchase. Missing or initially defective parts will be replaced free of charge during the period of this limited warranty. If parts are unavailable, a comparable replacement or refund will be given. **The original dated sales receipt is required for all warranty claims.** This warranty does not cover damage that has occurred during transport from the point of purchase to the consumer's home. This warranty does not cover glass, light bulbs, batteries, transportation, labour, or other issues not associated with the manufacture of the product.

**THIS PRODUCT IS FOR RESIDENTIAL USE ONLY. ANY COMMERCIAL USE OF THIS PRODUCT VOIDS ALL WARRANTIES AND FREES THE MANUFACTURER FROM ALL LIABILITY.**

Read and understand all assembly and operating instructions, all safety information, and warnings before use. The following will void this warranty: damage caused by tampering with, modifying, or altering the fireplace insert in any manner; damage due to incorrect assembly, improper care, misuse, or abuse; damage from being used with the wrong power source; water damage; damage caused by this insert being used outdoors; damage caused by this insert being used for excessive periods of time; damage caused by the insert being used in a commercial application; damage from use as a primary heat source; other misuse or abuse not specifically listed herein.

**THIS PRODUCT IS NOT INTENDED TO BE USED AS A PRIMARY HEAT SOURCE. IT IS FOR SUPPLEMENTAL HEATING PURPOSES ONLY.**

<b>Model:</b>	Geko 1000/1300/1500/1800/2200/2500
<b>Power Supply:</b>	120V-60Hz / 220-240V-50Hz
<b>Power Consumption:</b>	1500W
<b>Protection Class:</b>	I
<b>Lighting:</b>	LED

# Notes



**[www.omni-burn.co.uk](http://www.omni-burn.co.uk)**

Electric Fires UK Group Limited, Greenhough Road, Lichfield, Staffordshire, WS13 7AU

**Tel:** +44 1543 417052 | **Email:** [info@omni-burn.co.uk](mailto:info@omni-burn.co.uk)

**These products are only suitable for well insulated spaces or occasional use.**

Manufactured in China. All products are protected by patents, registered design and intellectual property rights. Electric Fires UK Group Limited will protect these rights. All specifications are correct at the time of publishing but are subject to change.

